

A photograph of two men in a professional setting, looking at a computer screen. The man in the foreground is older, with glasses, wearing a blue and white striped polo shirt. The man in the background is younger, with short dark hair, wearing a light-colored shirt. The image has a green tint overlay.

Acousticians, designers and
manufacturers of environmental
building products



100%

Be 100% confident in the
quality and performance
of our products

Award winning creators of quiet, **energy efficient attenuators, fan coil units, contemporary louvres, enclosures and screens**, bespoke services and **acoustic consultancy** for the construction industry.

We're pioneers

Partnering with you to lead our industry, by creating the best products, structuring our business around you and yours, sharing our knowledge, embracing new ways of working using the latest technologies and being careful of our environment.

We do things properly

We're fiercely independent, entrepreneurial in spirit and driven to create the best products.

We never cut corners, so when you partner with us you can be **100% confident in the quality and performance** of our products and that they'll be **delivered and installed on time**.



We care about our environment and we don't like waste. It starts with some thoughtful sourcing and ends up saving you time and money. So we all benefit.



Sourcing mastic duct sealant in large containers, rather than in plastic tubes and applying it with accurate guns cuts excessive packaging and waste.



Everything delivered to us is separated from plastic wrappers and cardboard packaging then compacted, baled and recycled.



Driving down waste of all kinds is the result of the big investment we make in our unique software.



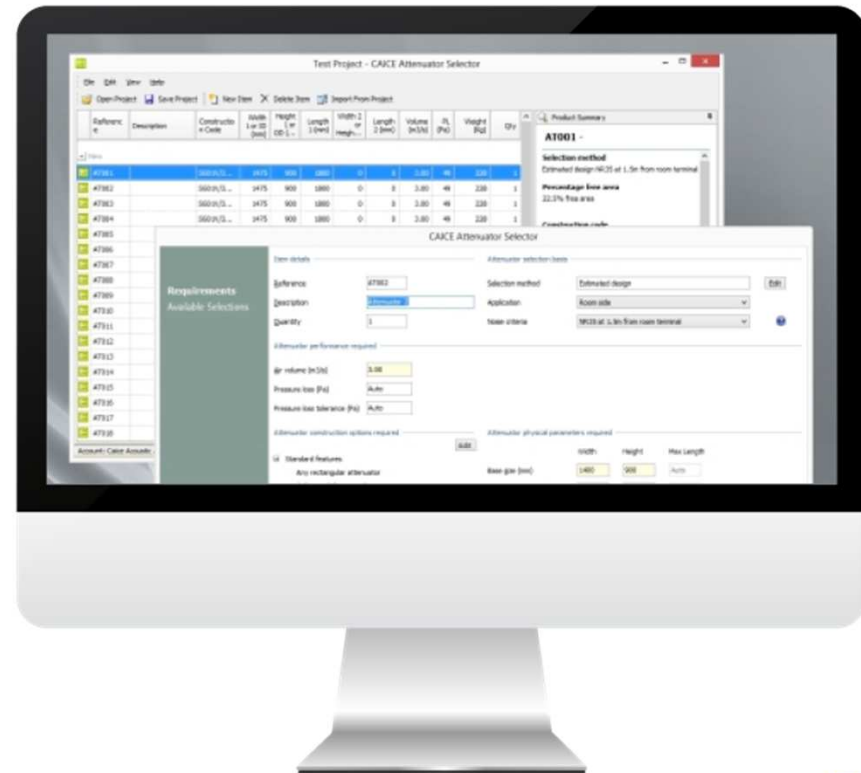
Delivery costs are as low as possible because our unique software optimises loads, reducing fuel and road miles.

Free software to help you select the best attenuators.

Attenuator Selector

The Caice Attenuator Selector is a new HVAC attenuator product selection and scheduling tool for Microsoft Windows, available free of charge for use by Mechanical & Electrical Services specifiers. The program has been designed, developed and is supported by Caice's in-house Microsoft Certified software development team.

- ✓ **Wide range of models and features**
- ✓ **Organise attenuator selections in projects**
- ✓ **Share these projects with colleagues**
- ✓ **Develop templates for repeat projects**
- ✓ **Produce attenuator schedules in Excel & PDF**
- ✓ **For all versions of Microsoft Windows**

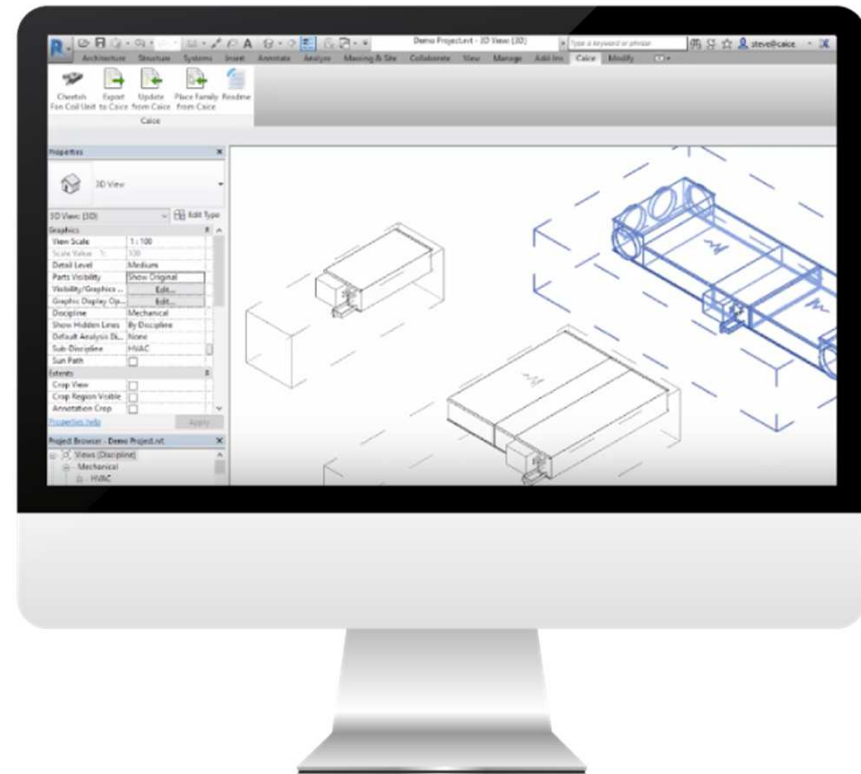


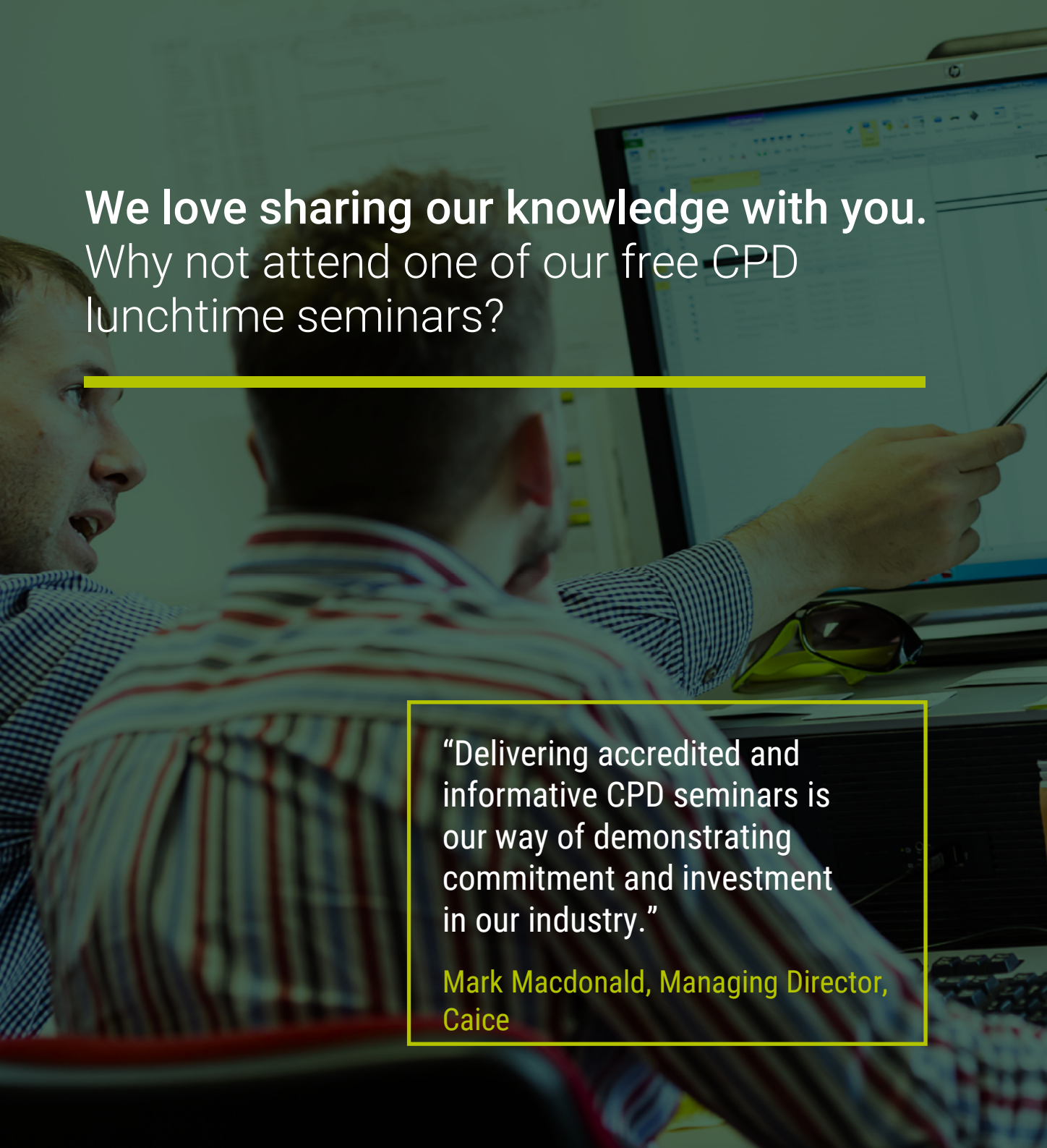
Free software to help you select the best fan coil units.

Revit Add-In

The Caice Revit Add-in enables you to create BIM level 2 COBie compliant models of our H235 & H270 Fan Coil Unit range directly from within Revit. You can also issue your product schedules directly from within Revit and import schedules issues from us with absolute ease. Just type in your requirements and the model is there for you.

- ✓ **Create COBie compliant models directly from within Revit**
- ✓ **Import, export and update product models and schedules**
- ✓ **No searching through BIM libraries**
- ✓ **No need to manually update product parameters during project lifecycle**
- ✓ **Tailor made models for your specific requirements**
- ✓ **Compatible with Revit 2015 through to 2021**





We love sharing our knowledge with you.
Why not attend one of our free CPD
lunchtime seminars?

“Delivering accredited and
informative CPD seminars is
our way of demonstrating
commitment and investment
in our industry.”

**Mark Macdonald, Managing Director,
Caice**



Our CPD courses are CIBSE accredited and
include the following seminars:

- ✓ **Introduction to acoustics**
- ✓ **Attenuator ventilation analysis**
- ✓ **Fan Coil Unit energy efficiency & acoustics**
- ✓ **Acoustic louvres**

For further details on the CIBSE CPD program
visit:

www.cibsecpd.org.uk

- ✓ **Plus bespoke CPDs designed for you**

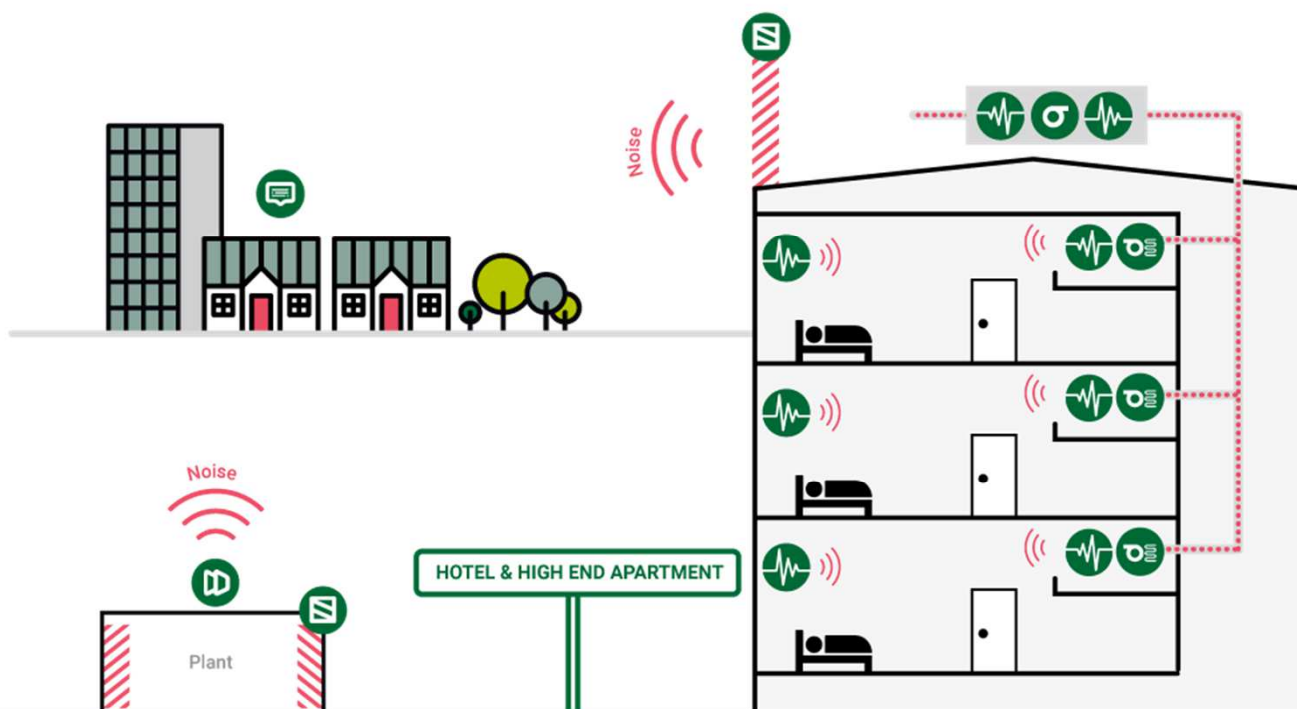


A photograph of two men in an office setting. An older man with glasses and a striped polo shirt is leaning over a desk, looking at a computer screen. A younger man is sitting at the desk, also looking at the screen. The image has a green tint and is partially obscured by a yellow horizontal bar at the bottom.

Partner with experts who
understand you and your market

RESIDENTIAL & HOTELS

Sssh! Listen, our products are designed to be quiet, for the perfect night's sleep – and won't disturb the neighbours either.



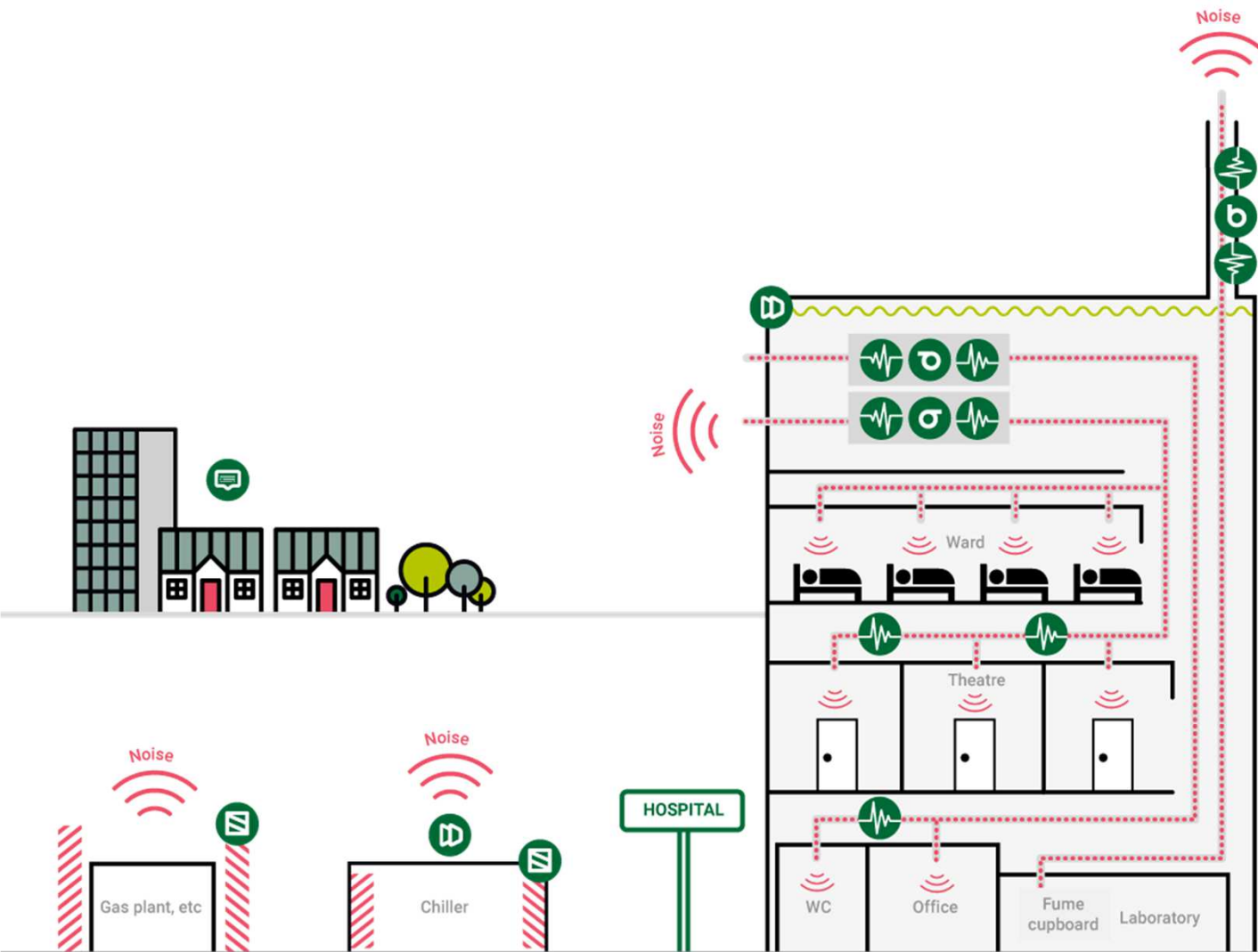
Residential and Hotels

Nowadays restful places for people to relax and unwind are essential. That's why we've designed our products to be as quiet as possible – especially at night. Also helping to justify any premium for the property.

Our acousticians will identify your noise targets so you can select the best products.

PUBLIC SECTOR

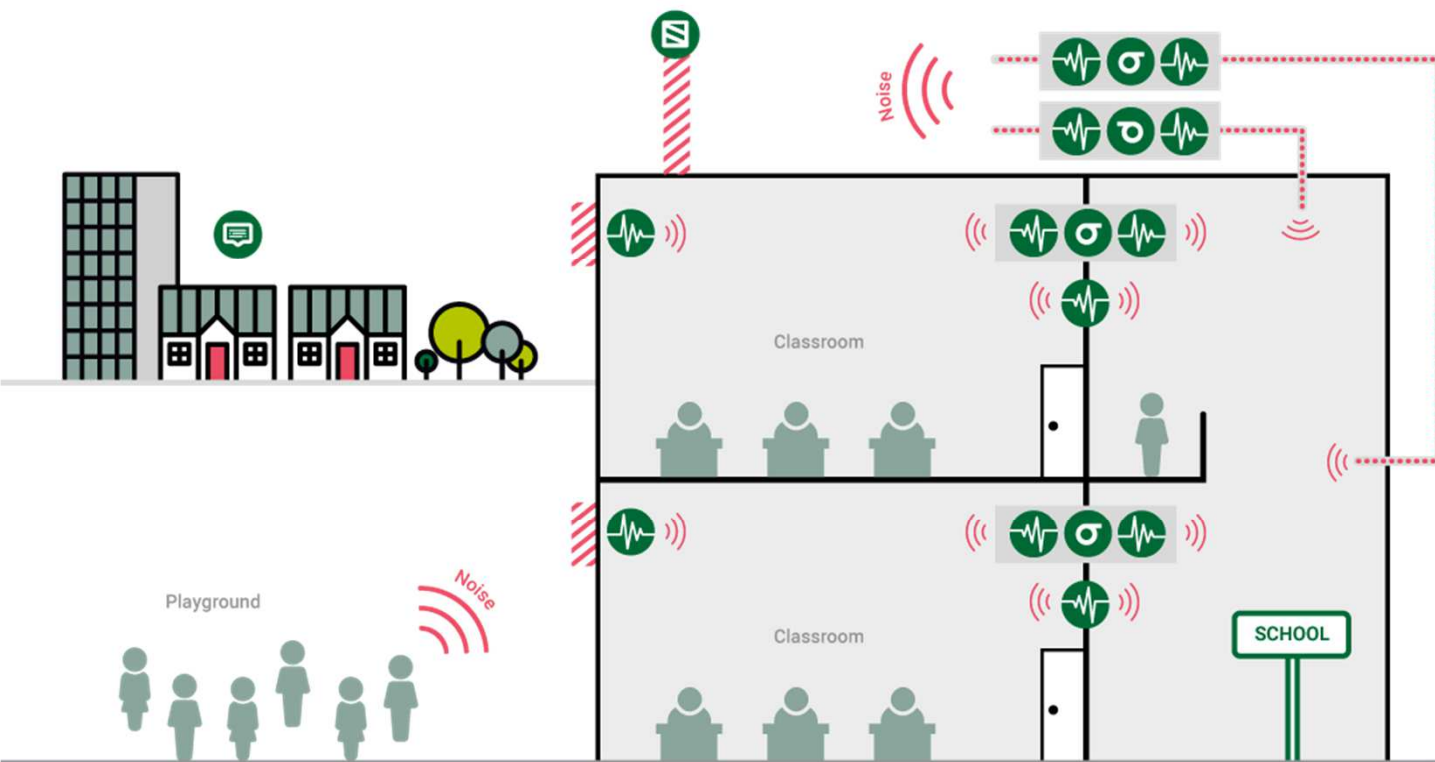
Our products are supporting the older generation in hospitals and the teaching of the next generation in schools.



Hospitals

Inside hospitals, our products reduce noise and stress in some of the cleanest, safest clinical environments for life changing surgery. Out of theatre they provide comfortable environments for patients to get better, faster and be ready to go home sooner. They also keep the noise down in labs, offices and plant rooms.

Our products reduce noise and stress



Schools

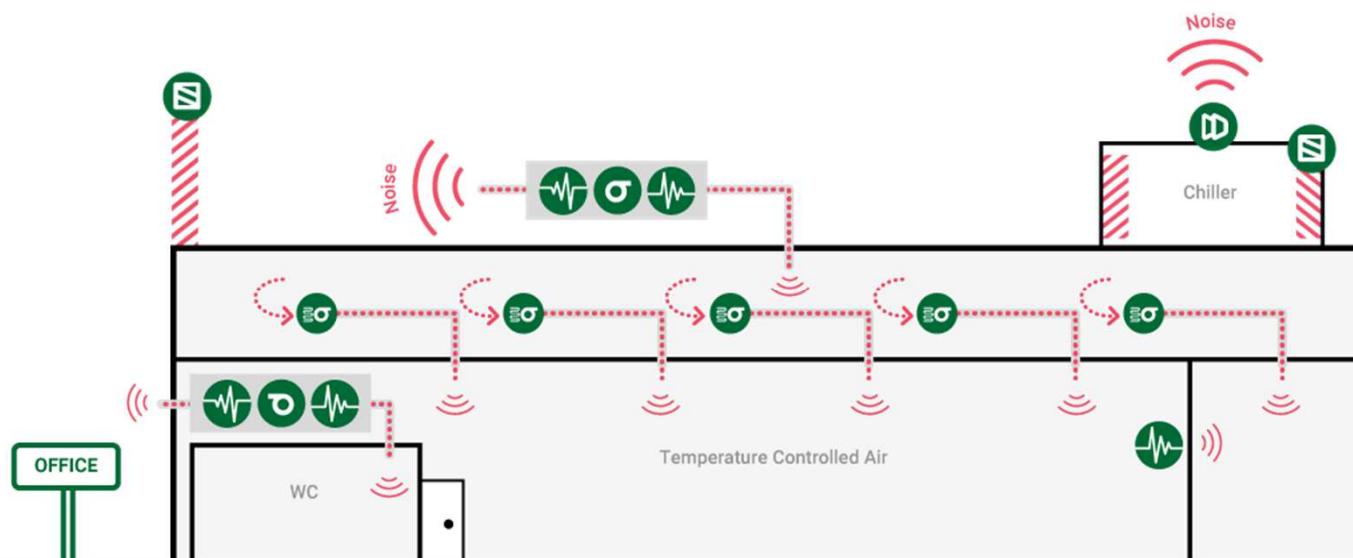
During term, our products quietly help teachers like yours educate students, in safe and climatically controlled classrooms and lecture theatres. At the same time they're also dampening disruptive playground noises disturbing those from learning inside.

Our acousticians will identify your noise targets so you can select the best products.

COMMERCIAL

Our products support productive working spaces and justify a rental premium.





Offices

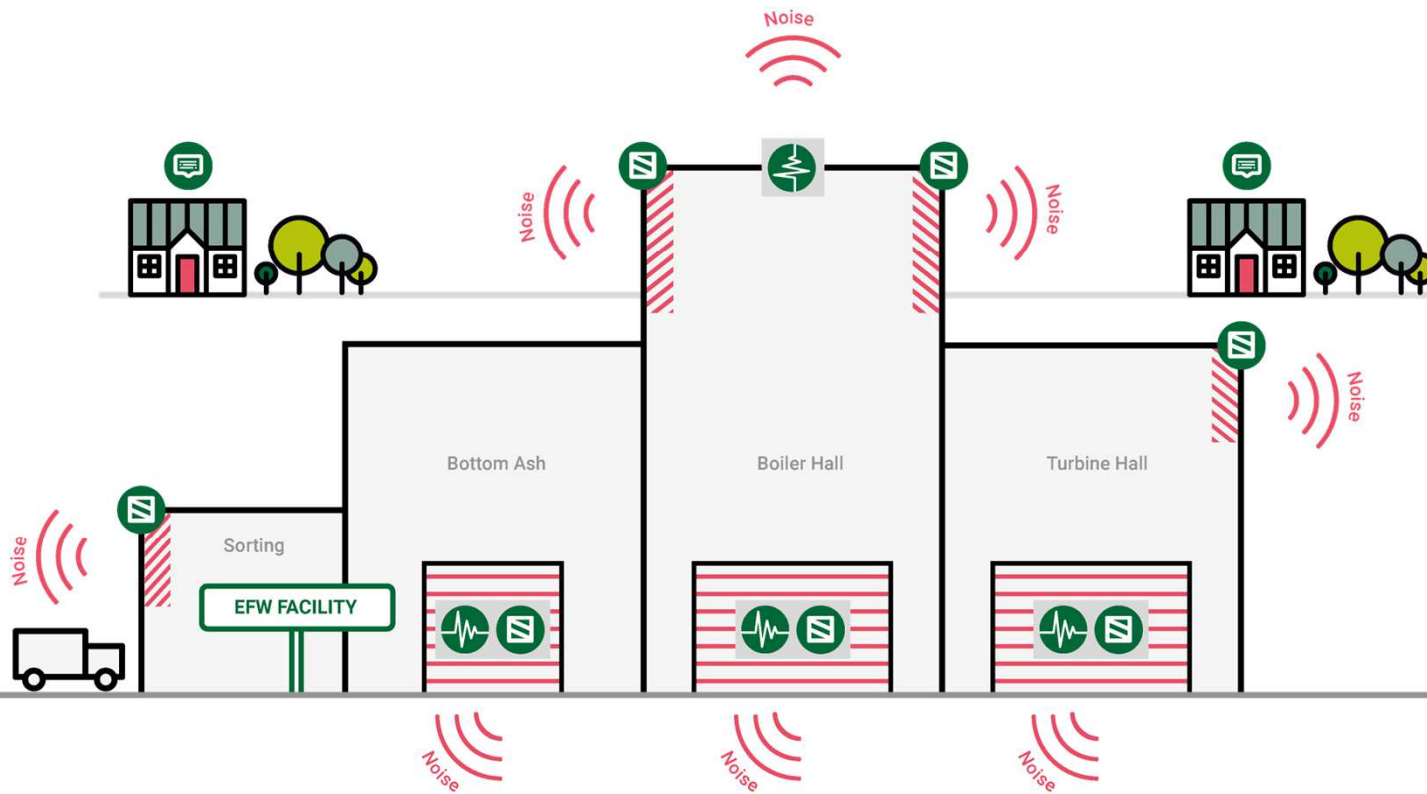
Spaces for work need to work really hard nowadays. Offices must be quiet and attractive places, with precise climate control, making collaboration and decision making easy, whatever the weather outside.

Our acousticians will identify your noise targets so you can select the best products.

INDUSTRIAL

Power generation, manufacturing and underground tunnels have one thing in common. They use bespoke versions of our products.





Energy From Waste (EFW) Facility

Industrial power generation and recycling waste reclaims energy, keeping the lights on in your home and in your business. Our louvres, enclosures and attenuators help reduce the impact these essential activities have on our environment by deadening noisy plant.

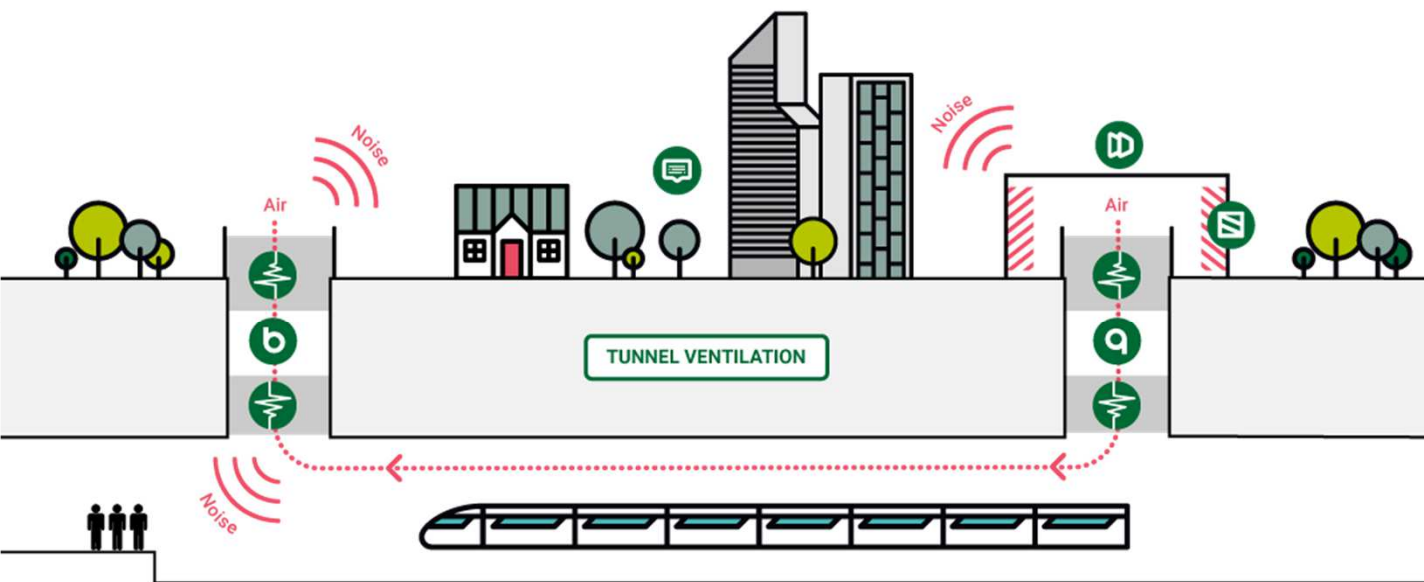
Our acousticians will identify your noise targets so you can select the best products.



The health and safety of the people manufacturing all the things for your busy life is very important, so our products provide clean, fresh air, as well as shielding them and their neighbours from noisy plant and equipment with sound deadening screens, enclosures and panels.

Our acousticians will identify your noise targets so you can select the best products.

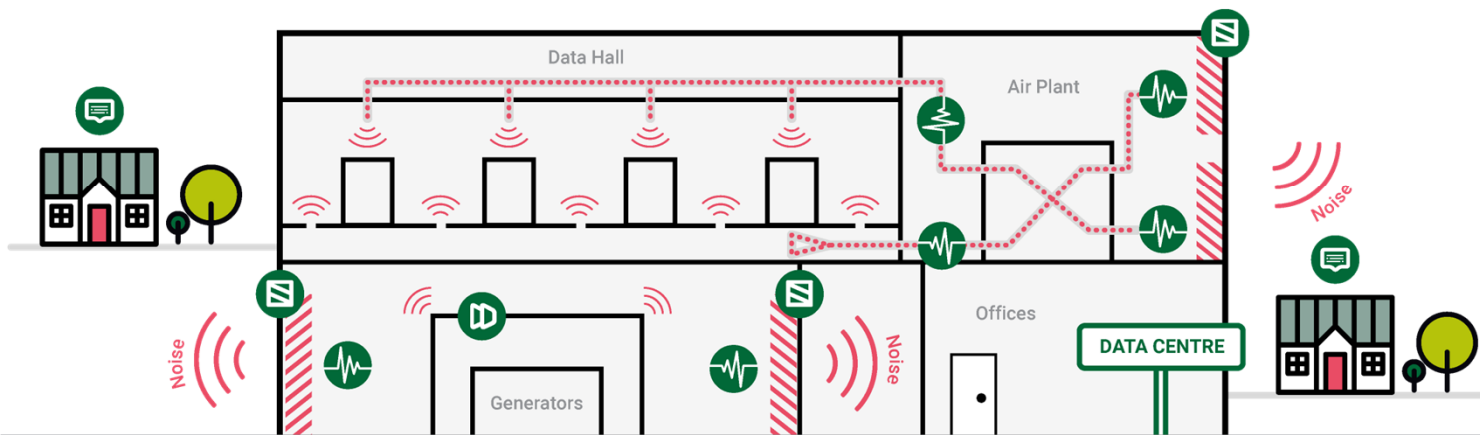




Tunnel Ventilation

Deep down in underground tunnels our ventilation products provide fresh air and a safe and comfortable environment for weary train passengers and car drivers. Back up on top, our attenuators and louvres prevent noisy plant and equipment from disturbing neighbours and spoiling the environment for everyone else.

Our acousticians will identify your noise targets so you can select the best products.



Data Centre

They have distinctly different demands with servers consuming a lot of energy to keep cool. Generators and back-up power systems can be noisy so our enclosures, sound deadening screens and attenuators keep things nice and quiet for those hard at work and any close neighbours.

Our acousticians will identify your noise targets so you can select the best products.

A photograph of two men in an office setting. An older man with glasses and a striped polo shirt is leaning over a desk, looking at a computer screen. A younger man is sitting at the desk, also looking at the screen. The image has a green tint overlay.

An industry leading range of
environmental building products

We're continually investing in new product development. No more undesirable noise in quiet spaces.

99.8%

Delivered on time

Product range



Attenuators



Fan coil
units



Acoustic Window
Ventilators



Enclosures
& screens



Louvres



Acoustic
consultancy

Guaranteed performance, as nobody
assessed against ISO 7235:2009
in a UKAS accredited facility as we have



Attenuators

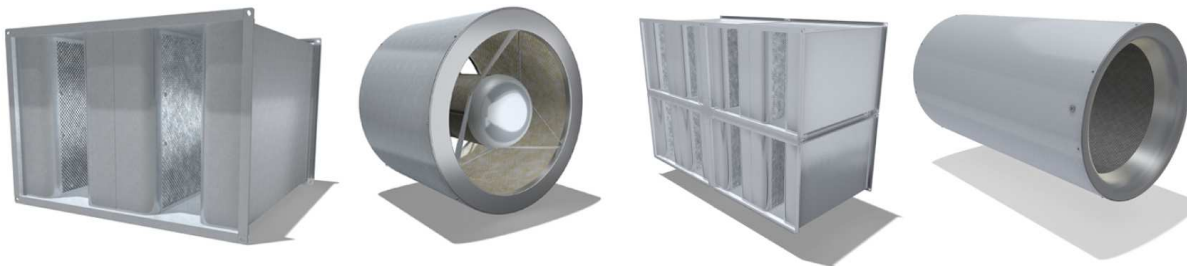
Construction

We have undertaken rigorous destruction testing on the products to ensure that they are fit for purpose. Attenuator casings have been pressure tested up to 2000 Pa to ensure that flanges do not deflect beyond the limits specified within DW/TM1.

Performance

We are the only manufacturer in the UK that has an attenuator testing laboratory capable of measuring static and dynamic performance fully in accordance with BS EN ISO 7235: 2009 "Acoustics – laboratory measurement procedures for ducted silencers and air terminal units – insertion loss, flow noise and total pressure loss".

This has enabled an extensive testing programme to be undertaken that has provided us with more accurate performance data for our products, than was previously possible.



We have the expertise to research, develop, test and construct almost any attenuator product



Attenuators

Manufacturing technology

Our production centre utilises a range of highly specialised machinery that largely automates the attenuator manufacturing process. A duct line produces attenuator casings with integral 20 or 30mm flanges. Expanded metal for splitter facings is de-coiled and fibreglass tissue is bonded as part of the process. A splitter line de-coils and roll-forms all the splitter frame parts and all the parts finally come together on the Attenuator Assemble Line. Consequently we can make attenuator products quicker, more cost effectively and to a higher quality than any other UK manufacturer.

Other materials

We can also provide attenuators constructed from a range of other materials where required:

- ✓ **Stainless steel**
- ✓ **Plastic**
- ✓ **Heavy duty galvanised steel**

Fire rating

Flanged attenuators detailed within this brochure are capable of maintaining temperature of 300°C for a period of 120 minutes. However fire certification should be provided by the ductwork supplier.

We have the expertise to research, develop, test and construct almost any attenuator product



Attenuators

Whole house ventilation attenuators

The Whole House Ventilation attenuator offers a reliable and cost effective method of reducing noise in a domestic ventilation system to help compliance with Part F of The Building Regulations. This product is also suitable for use in commercial applications such as schools or offices.



Features

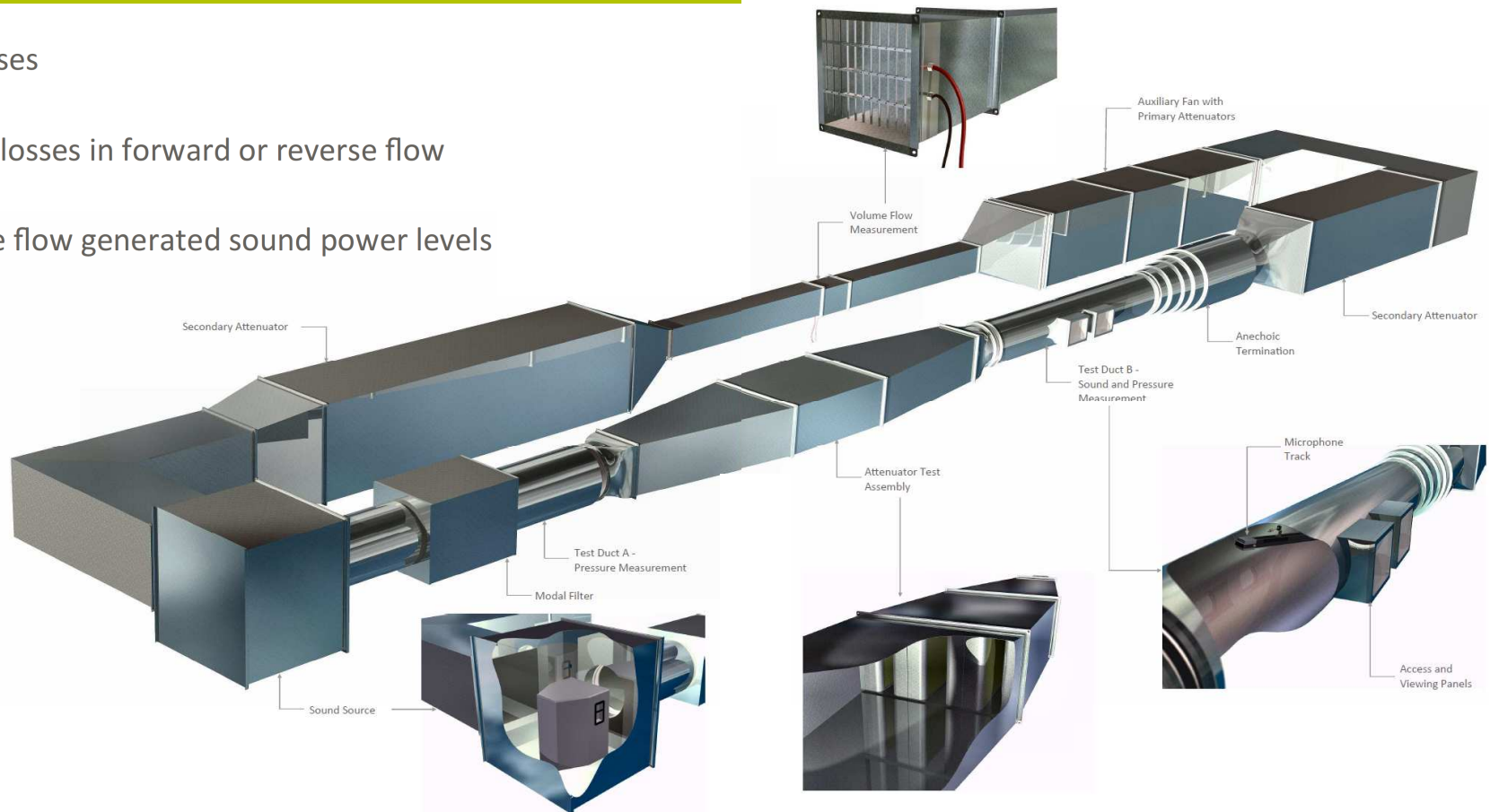
- ✓ Reduces noise transmission from MVHR appliances, and can also be used to control cross-talk between rooms.
- ✓ Suitable for both domestic and commercial applications.
- ✓ Aids compliance with Approved Documents F of the Building Regulations.
- ✓ Reliable acoustic performance data.
- ✓ Sizes compatible with 204×60 and 220×90 plastic ductwork. Various lengths available.
- ✓ Low height facilitates installation within ceiling and floor voids.
- ✓ Robust galvanised steel construction, resistant to corrosion.
- ✓ Polyester powder paint finish available.

Quality data to ensure you achieve your design targets – if in doubt test it!



Attenuators

- Static insertion losses
- Dynamic insertion losses in forward or reverse flow
- Forward or reverse flow generated sound power levels
- Total pressure loss



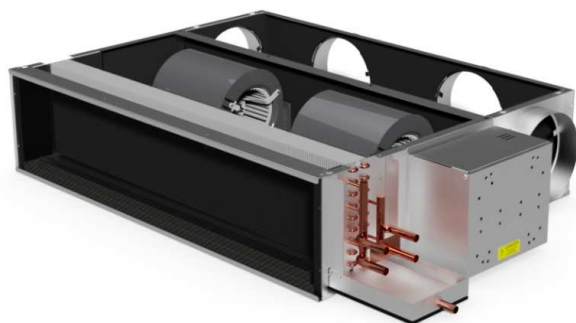


Fan coil
units

Based on outstanding performance, our Fan Coil Units are the best value on the market and set the standard for quietness

H235 & H270 Fan Coil Units

Our Fan Coil Units are designed and built for efficiency offering reduced total cost of ownership and full compliance with building regulations.



Features & Benefits

- ✓ **Our in-house acoustic design service will guarantee that our fan coil units will achieve your specified noise criteria.**
- ✓ **With 1400 hours of testing, the most reliable thermal and noise data of any Fan Coil Unit product on the market.**
- ✓ **Set the standard for energy efficiency and ensure that all of our units are compliant with Part L of the Building Regulations.**

Modular design

Caice's modular fan coil unit design allows a solution to be built up from component options to suit the needs of a project.

The modular offering consists of the fan coil core, a choice of inlet & discharge plenums and a range of inlet and discharge attenuators. Starting with a core unit, modules are added to tailor the unit to suit the installation.

FINALIST

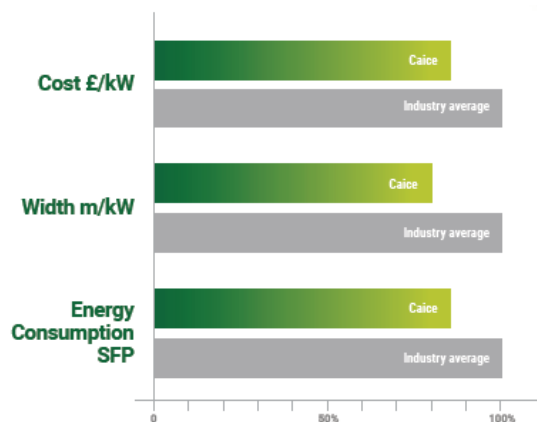


Based on outstanding performance, our Fan Coil Units are the best value on the market and set the standard for quietness



Fan coil units

Efficient & Cost Effective



Source: Industry average data is from publicly available data and based on five of our closest competitors. August 2018. Illustrative based on NR35 for open plan offices.

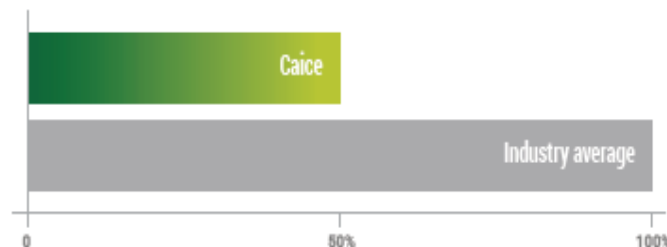
FINALIST



Why waste energy?

Our new coil design offers more uniform thermal transfer leading to an increased Sensible Heat Ratio and reduced Latent Factor by 50%.

So with our fan coil unit range your whole system cost has reduced as we've lowered your requirements for Chillers and Pumps.



Easy Access to Maintain with Lower Service Costs

Optional side fan access and withdrawal allows fans, controls and filters to be removed, serviced or replaced via a **600mm x 600mm** ceiling access hatch.

Wide Range of Applications

The range includes models suitable for either exposed, ceiling or floor void applications making Caice Fan Coil units ideal for installation in residential, hotel, office & school environments.

Designed & Manufactured in the UK



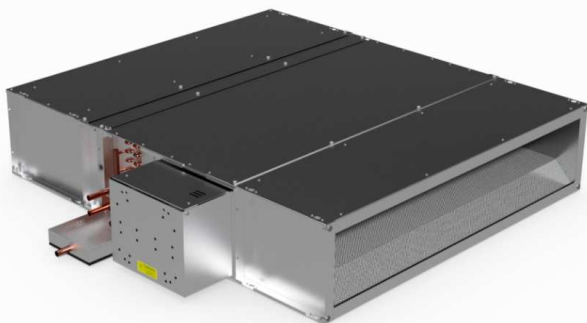


Fan coil
units

Based on outstanding performance, our Fan Coil Units are the best value on the market and set the standard for quietness

Optimised performance with the application of Attenuators

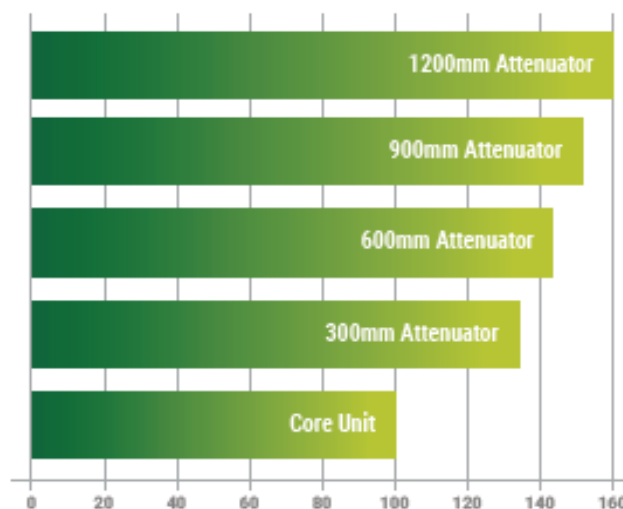
Ideal for residential and hotel applications with noise level values as low as NR25 whilst considering the complexity of you project.



FINALIST



Discover the benefits of applying Attenuators, up to 60% more kW cooling



Illustrative based on NR30 for residential bedrooms.

BIM level 2 ready

BIM Level 2 Ready

REVIT BIM models and COBie parameters via the Caice BIM selector.



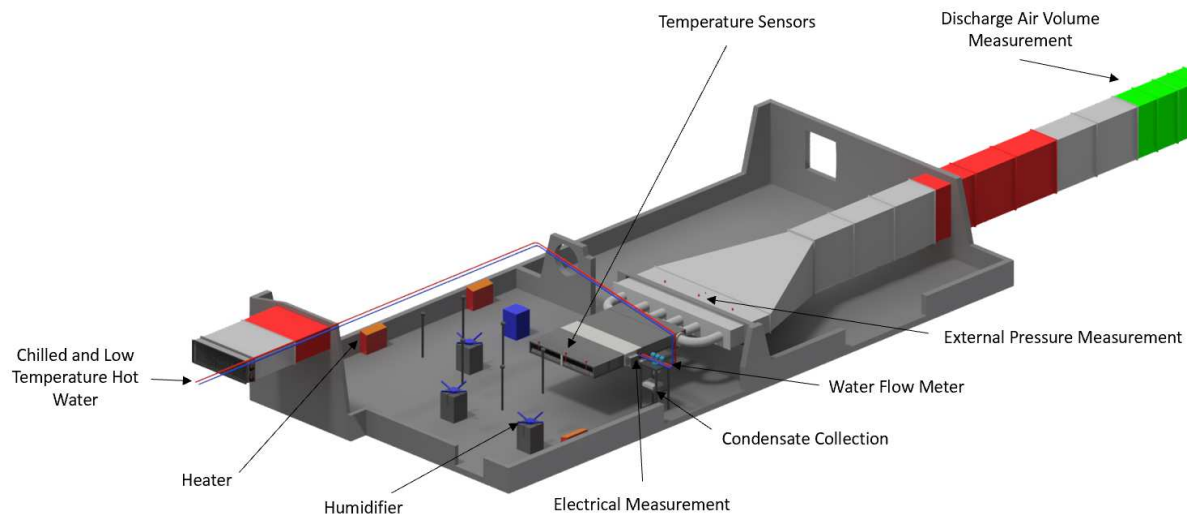
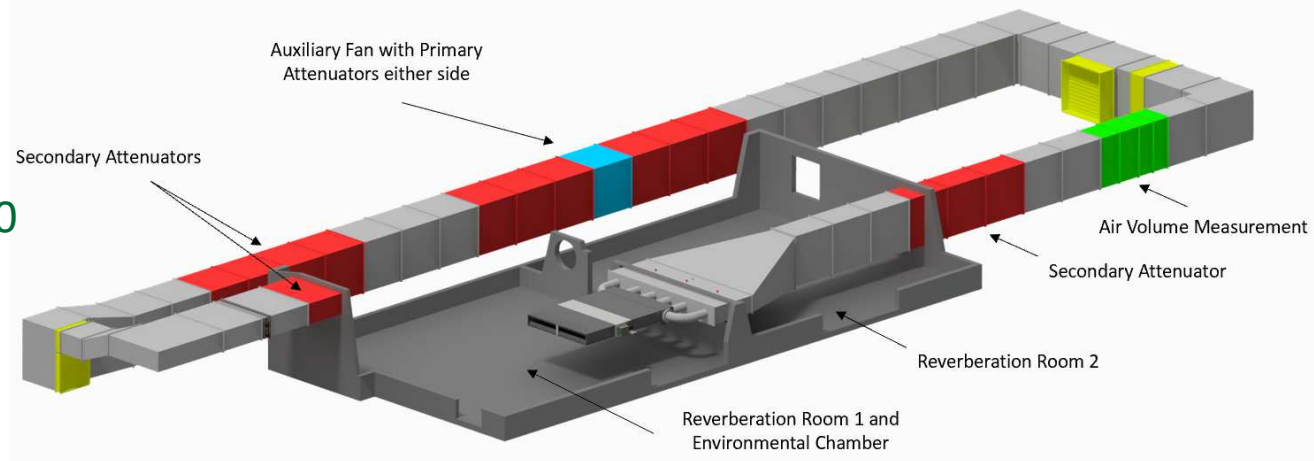
Quality data to ensure you achieve your design targets – if in doubt test it!



Fan coil units



Acoustic Testing to BS EN ISO 3741:2010 and BS 4856-4:1997



Thermal Testing to BS EN 1397:2015

Commissioned by -



We have the expertise to research, develop, test and construct almost any attenuator product



Acoustic Window Ventilators

Acoustic window ventilators

Designed with residential dwellings and hotel bedrooms in mind, but can be adapted to suit almost any other natural ventilation project where background or trickle ventilation is required.

Intended for integration into a building façade and would usually be positioned above a window. Matching non active (dummy) ventilators can also be supplied.

Features

- ✓ **Acoustic performance to $D_{n,e,w}$ 55dB**
- ✓ **Meets the ventilation requirements of Approved Document F 2010**
- ✓ **Flush finish complements window design**
- ✓ **Polyester powder painted for superior appearance**
- ✓ **Thermal break incorporated as standard**
- ✓ **Suitable for residential buildings with occupied floors under 18 metres.**



Bespoke designs make noisy equipment **quiet**, meeting local environmental and planning conditions.



Enclosures
& screens

Acoustic enclosures

A bespoke and highly effective barrier for any noisy equipment.

Our acoustic enclosures surround the equipment, forming a noise reducing barrier. Ideal for chillers, condensers, diesel generators and loud manufacturing processes.

As the product is bespoke it includes options for doors, windows, ventilation systems and attenuators. It is designed to meet all local environmental conditions, planning restrictions and noise level requirements.



Bespoke designs make noisy equipment quiet, meeting local environmental and planning conditions.



Enclosures
& screens

Acoustic screens

Seen and not heard.

Our acoustic screens offer an aesthetically pleasing and effective barrier to noise between mechanical plant equipment and noise sensitive areas. They're designed to the specific requirements of your project, are available in solid or louvred finishes and can be supplied with necessary support steelwork.



Bespoke designs make noisy equipment quiet, meeting local environmental and planning conditions.



Enclosures
& screens

Acoustic panelling

Don't let reverberant noise be an issue.

Our acoustic panelling is designed to be fixed to the fabric of the building to reduce a room's reverberant noise level. Available in different thicknesses to suit all kinds of application, our panels are perfectly suited to plant rooms, production areas, swimming pools or wherever reverberant noise is an issue.



Nobody likes noisy neighbours. **Reduce noise levels with our Pioneering Continuous Line Acoustic Louvre Systems.**

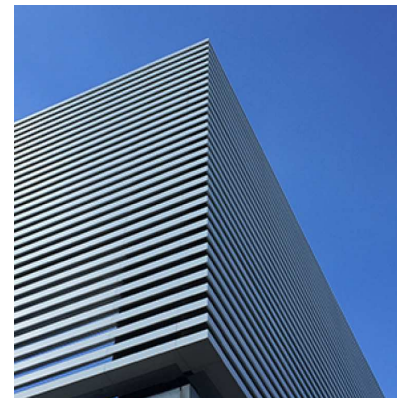
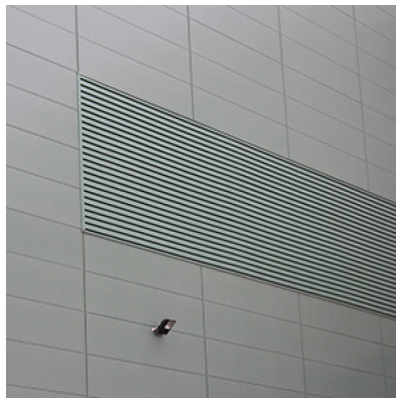
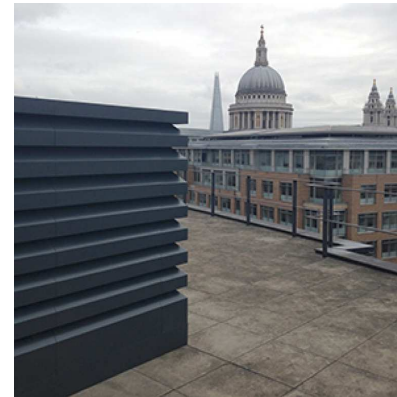


Louvres

Acoustic louvres

Noise from plant and machinery within built-up areas is a serious issue. Modern buildings require substantial air input and extraction for mechanised and natural ventilation. Your project has a unique set of requirements and our range of acoustic louvres will satisfy most circumstances. However, we'll rise to every challenge and our bespoke service will meet your specialist needs, if required.

Our acoustic louvres are fabricated from galvanized steel and are finished in powder-coated paint, with most RAL colours available. They have been tested to the latest standards & we can even offer Class "A" weathering for natural ventilation systems.



Our weather louvre systems range is perfect for visual screening, exterior cladding and intake or extract ventilation.



Louvres

Weather louvres

Our engineering experience encompasses weather louvres for screening, cladding and ventilation.

All systems are designed around extruded aluminium profiles and constructed to meet your precise requirements. Options for integral doors, mitred corners, bird guard, insect mesh and blanking panels can be included.

Standard finishes include polyester powder paint with most RAL finishes available.

Our range includes Class "A" weathering with velocities up to 2.5m/s and thermally insulated blanking.



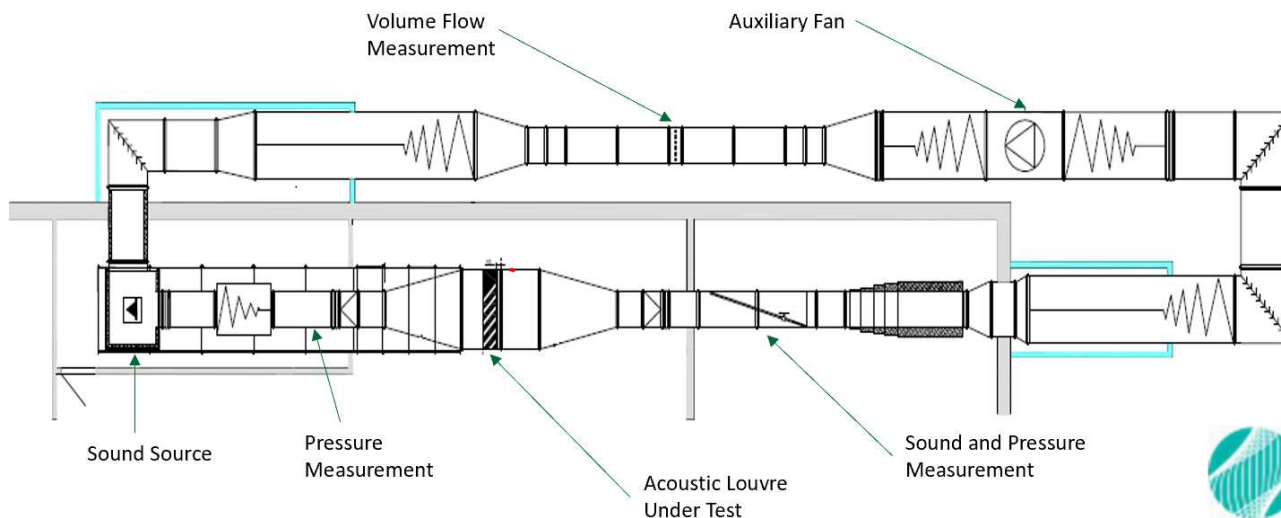
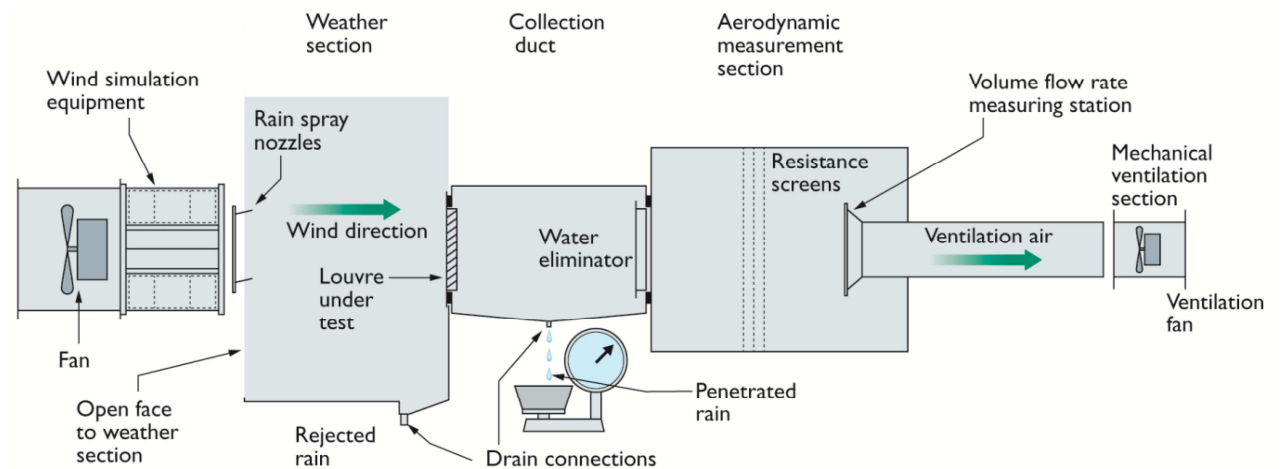
Quality data to ensure you achieve your design targets – if in doubt test it!



Louvres



Rain Penetration to EN 13030:2001



Acoustic Testing to
BS EN ISO 7235:2009 and
BS EN ISO 10140-2:2010



Experienced and professional acoustic consultancy for the planning, design, construction and final commissioning stages



Acoustic
consultancy

If you have a tricky question or challenging project then you are in the right place.

Our acousticians have specialist expertise and deep experience across a broad range of different types of projects including offices, supermarkets, schools, hospitals, hotels and leisure facilities, residential developments and lab based product performance testing.

From noise surveys at the planning stage, consultancy at the design and construction stage, through to final commissioning, all areas are covered.



Our consultants will personally manage your project using the latest measurement instrumentation and acoustic modelling software for improved accuracy – resulting in cost effective design solutions.



Our consultancy service together with the supply of Caice products will give you peace of mind – this is all part of our Total Acoustic Responsibility offering.



Head office

Riverside House, Unit 3
Winnersh Fields, Wokingham
Berkshire RG41 5QS

t: +44 (0)118 918 6470

f: +44 (0)118 918 6480

enquiries@caice.co.uk

A photograph of two men in an office setting. An older man with glasses and a striped polo shirt is leaning over a desk, looking at a computer screen. A younger man is sitting at the desk, also looking at the screen. The image has a green tint.

Got a question? We'll have the
answer, just get in touch.
