



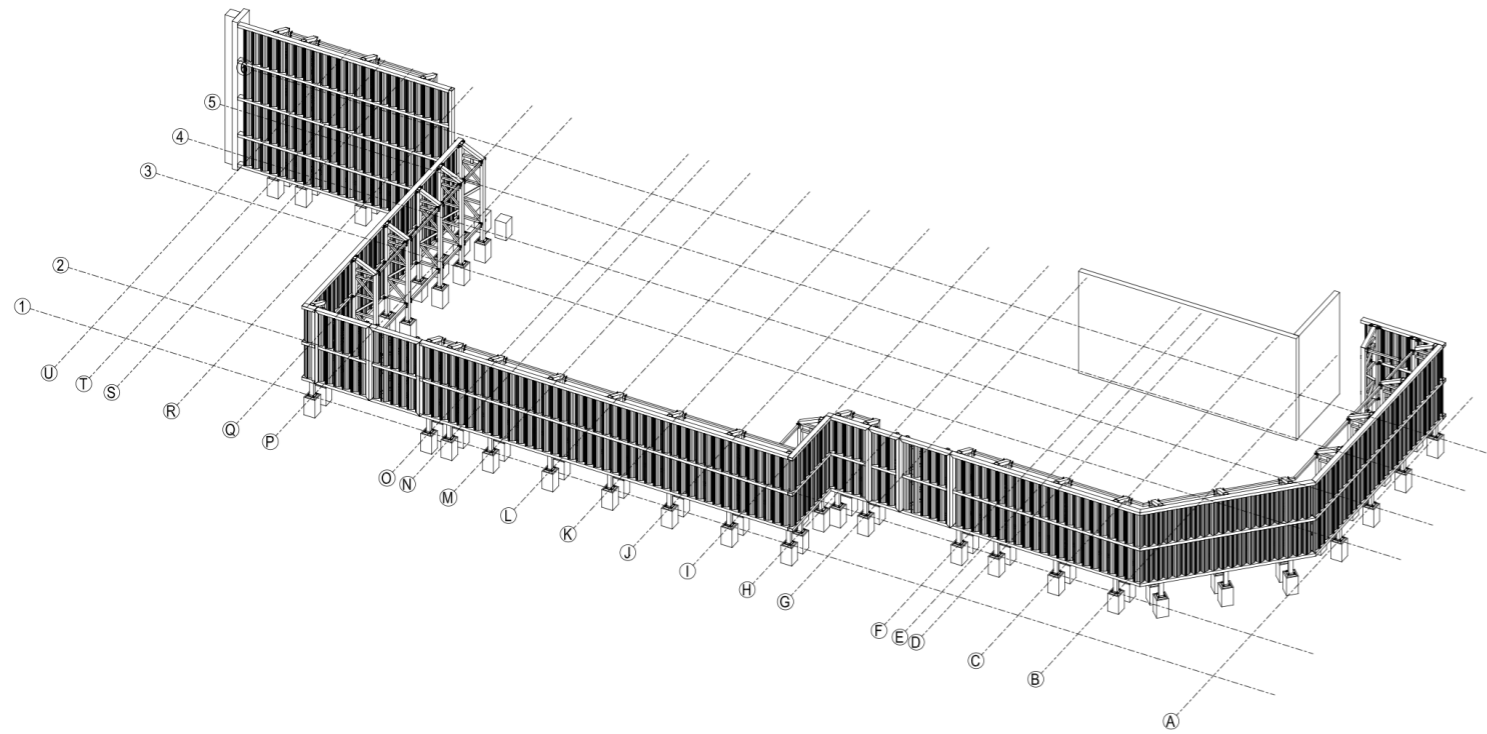
# Structural Steelwork



Certificate Number 26789  
ISO 9001  
ISO 14001  
ISO 45001

**PME**  **ب ام اي**  
WLL For Energy **ذ م م للطاقة**

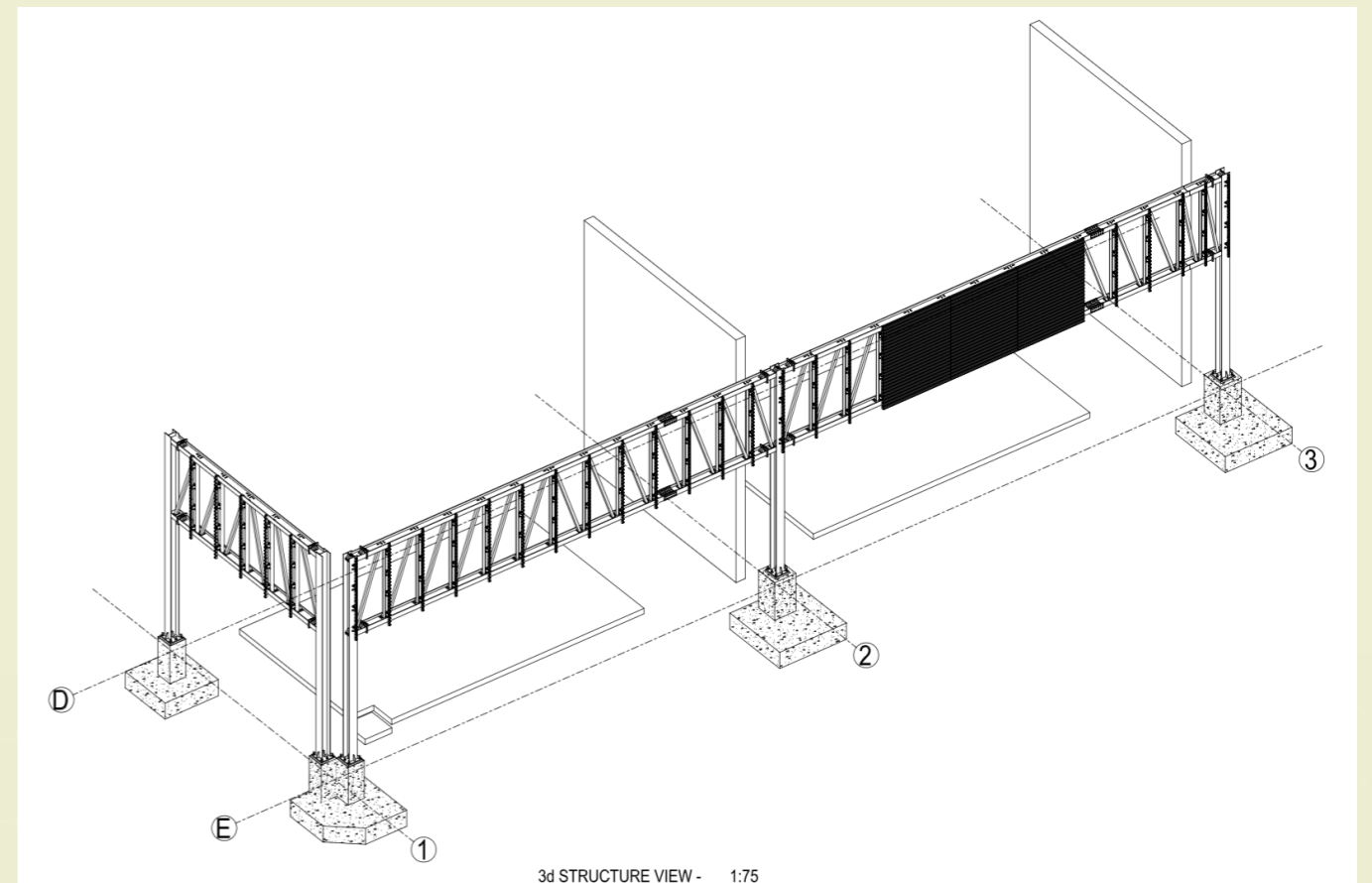
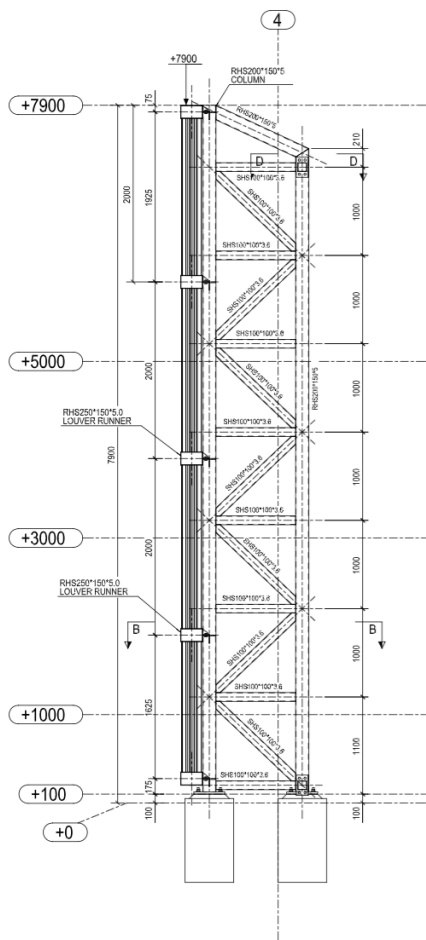
صناعة  
سعودية   
 **SAUDI  
MADE**



## Design and Engineering

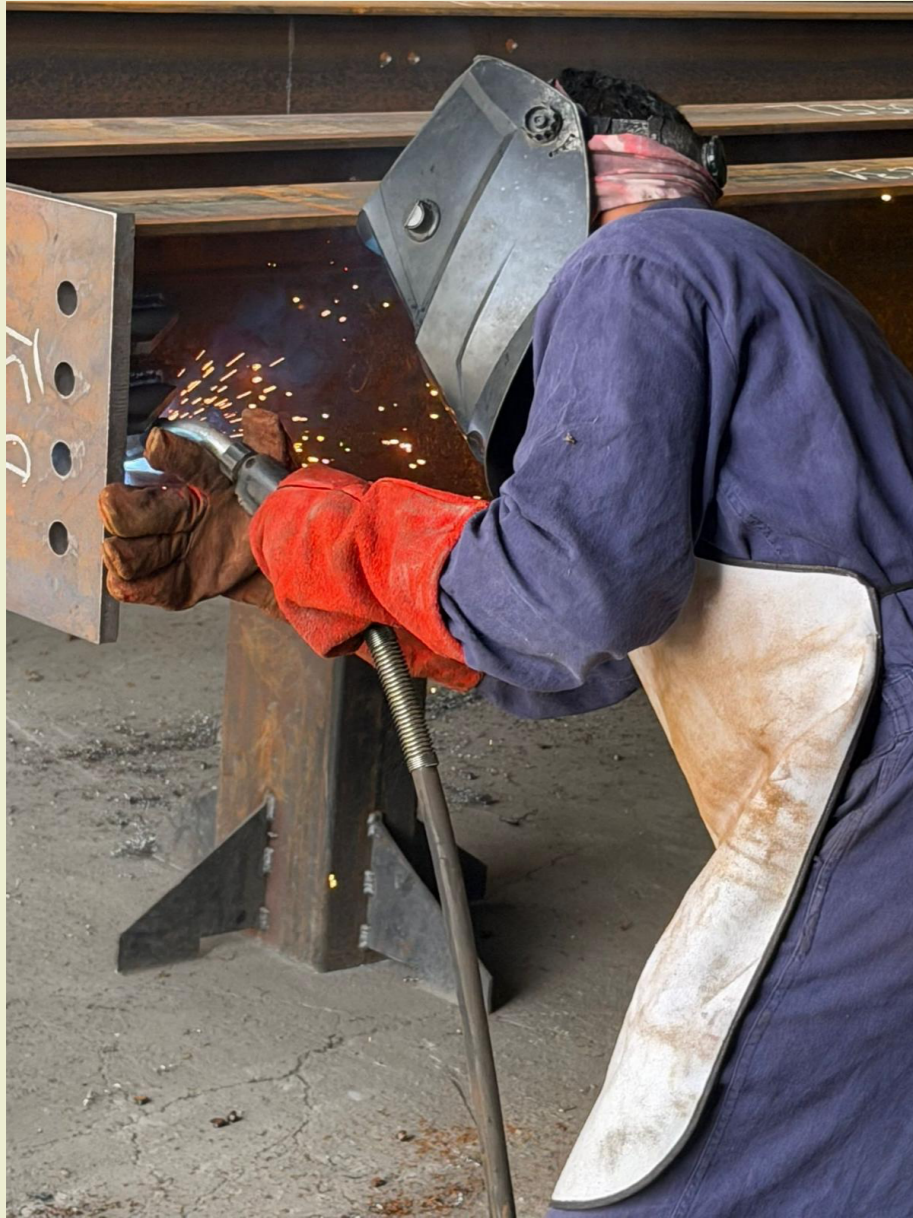
Our in-house Design team provides full service from design through engineering to fabrication and installation drawings, all in accordance with recognized international standards. These will include full structural and windload calculations.

Design and Engineering goes beyond the structural requirements, incorporating specific finishes, colours and even textures,



Working to our Clients requirements we can develop full design and engineering from their concepts. Working closely as part of our Clients team, our objective is to enable our Clients to achieve the project to their specification and particular requirements, from start to finish.

## Fabrication



We manufacture in the Kingdom of Saudi Arabia. Using local steel and aluminium suppliers with purpose made dies produced for our bespoke extrusions.



Our bespoke structural steelwork fabrications are engineered not only to be structurally fit for purpose but also aesthetically pleasing



All production is closely monitored with full traceability under our ISO accreditation. From sourcing of materials, local galvanizers and powder coating suppliers.

# Inspection

Our fully qualified and experienced Inspection team carry out testing and monitoring from start to finish. From material mill certificates, welding testing throughout the manufacture process to measuring and visual checks.



Fabrication Inspections are carried out routinely including weld testing, machinery calibration and material traceability, all recorded and maintained to ensure continuing standards are maintained.



PME WLL - FORM		Form Ref: PME/FRM/F228	
FABRICATION INSPECTION FORM		Issue No: 2	
		Issue Date: 12/01/25	
		Page: 1 of 3	
Company:	Dust Factory and Zamil Industrial Coatings	Contract Ref:	
Location:	Dammam Industrial Area 2	Date of Visit:	1/2/25
Activity/ Product:	Steel profiles, Powder coating and galvanizing inspection Profile 1, 2, 7 and 8. Pre inspection of materials prior to galvanizing and powder coating.		
Time in:	10:00am until 2:00pm	Factory Representative:	Mr Jiji Joseph
Time out:			
<b>General Description of Premises</b> (Please state what the General Housekeeping is like, whether the workforce are using the correct PPE, Machinery is in good order etc)			
1. All good. The workshop area is clean and organized. Each workstation was clear of any debris and was in a safe manner. 2. Support beams were visually inspected and had been QC passed by Mr Jiji. 3. All workers using PPE and following strict health and safety procedures. 4. Profile 1, 2, 7 and 8 were inspected. Weld and new drainage holes for galvanizing were inspected. Modified from 12mm to 15mm diameter. 5. Reason for visiting - Total Quality Management procedure to ensure profiles meet standards in accordance with engineering drawing specifications.			
<b>Details of Inspection:</b> 24/1/25			
<b>Documentation:</b>			
Mill Certificate Available:	N/A		
Delivery Note Available:	N/A		
Other:			
<b>Material Specification:</b> Steel, Galvanizing and powder coating inspection.			
Type of Steel:	Galvanized steel and powder coating.		
Wall Thickness:	25mm and 5mm		
Type of Welding Wire Used:	N/A		
Other:			
<b>General comments on Steel, Powder Coating and Galvanizing Inspection.</b> (include material thickness, digital records of paint thickness, galvanizing thickness, evidence of paint finish, galvanizing finish, test results.)			
<ul style="list-style-type: none"> <li>Steel inspected prior to galvanizing and powder coating. Pre inspection visit to keep the total quality assurance in line with specification of engineering drawing standards. No visual issues identified.</li> <li>First inspection, a visual look at the drainage holes on each profile section. 15mm end mill with clean cutting edges was used to enlarge the existing (12mm holes to 15mm diameter). The structural engineer cleared the modification. Reason for safe flow and consistent galvanizing process.</li> </ul>			
Inspected by:	Date: 1/2/25	Name: Martin Plunkett	
Reviewed by:	Date: 1/2/25	Name: Mr Biju Mr Mohamaddin	

PME WLL - FORM		Form Ref: PME/FRM/F228
FABRICATION INSPECTION FORM		Issue No: 2
		Issue Date: 12/01/25
		Page: 3 of 3
<b>IRM</b> Form Ref: PME/FRM/F228 <b>INSPECTION FORM</b> Issue No: 2 Issue Date: 12/01/25 Page: 2 of 3		
To keep the cutting tool square to the edge of the profile and record for each hole. An internal digital caliper was used to measure the hole. The hole was safely positioned in the yard storage area. There was no area was clean and all employees were wearing PPE.		
100% of galvanizing were applied to the material. No evidence of galvanizing on surfaces. All passed the samples for the next stage of powder coating are taken.		



Our team regularly visits galvanizing and powder coating facilities to monitor progress, quality and to ensure we maintain standards. Developing relationships with our suppliers is a key part of our business strategy.

# Installation



Installation is a key part of our service. Our Site Management team are selected based on their experience and qualifications, ensuring that Health and Safety are as important as QA/QC whilst maintaining programs.



Over the years we pride ourselves on delivering projects successfully and on time to a variety of specialist applications. From airports and hotels to a Nuclear Power Station we continue to deliver specific Client requirements on time and to specification.



Planning is a key element of our operation, each project has its own specific requirements and working procedures. We work closely with our Clients to ensure that all Permits to Work and Health and Safety procedures are aligned with the site requirements.

# Structural Steelwork

Design

Engineering

Fabrication

Installation

## Middle East Office Bahrain

Office 801, Eighth Floor,  
Address Tower, Building 655,  
Road 3614, Al Seef Area 0436,  
Kingdom of Bahrain

## Middle East Office Saudi Arabia

Level 29, Olaya Towers,  
Tower B, Intersection of Olaya Street  
and Mohammed Bin Abdul-Aziz Street,  
Riyadh, 11523, KSA



Certificate Number 26789  
ISO 9001  
ISO 14001  
ISO 45001

